

The Bermuda Regional, 2012

Bulletin No. 4
Tuesday, January 24th



Editor: Janet Evans

OH, WHAT A SIGHT!

BLOOMING LOVELY FROM THE GARDEN STATE



The Bermuda Regional welcomes Debbie Crisfield (pictured kneeling on one leg in the middle holding her convention card) and her contingent from New Jersey. Despite their flight being delayed, they remain in high spirits as you can see from this jaunty pose. "Three years ago, I came with 4 people," said Debbie. "Last year, I bought 28 and this year we are 40. Next year, the sky's the limit!"

We shall miss them when they leave on Wednesday but look forward to welcoming them back next year.

Contents

Today's and Tomorrow's Programme	2	Winners	3
In the Spotlight	4	Expert Lecture	5
Local Lore/ Bermuda Bits	6	Bridge Boffin Competition	7
Alert! Notices	8	Caddie Corner	9
Yesterday's Best	10-11	Results	12-17

TODAY'S PROGRAMME (TUESDAY, January 24th)

- 9:00 a.m.** **Compact Knockout Teams- Cedar Series (Completion)**
Stratified Side Game – Warwick Series Session 1
Newcomer Stratified Pairs
- 10:30 a.m.** Expert Panel Show (Gardenia Room)
- 1:00 p.m.** **Bracketed Championship KO Teams – 2nd Round**
(Continues to Thursday)
Stratified Side Game – Warwick Series Session 2
Newcomer Stratified Pairs
- 4:30 p.m.** Expert Lecture by Robert Todd (Gardenia Room)
Hand Evaluation
- 8:15 p.m.** **Stratified Championship Pairs (2nd Session)**
Stratified Side Game – Warwick Series Session 3
Newcomer Stratified Pairs

Championship Events in **Bold**



TOMORROW'S PROGRAMME (WEDNESDAY, January 25th)

- 9:00 a.m.** **Swiss Teams (1st Session)**
(Finishes on Thursday a.m.)

Stratified Side Game – Warwick Series Session 4

Newcomer Stratified Pairs
- 1:00 p.m.** **Bracketed Championship KO Teams (Semi-Finals)**
Compact KO Teams – Sandy's Series
(Finishes on Thursday afternoon – maximum 4 players per team)

Stratified Side Game – Warwick Series Session 5

Newcomer Stratified Pairs
- 4:00 p.m.** Local Craft Market
- 8:15 p.m.** **Stratified Open Pairs (1st Session)**
Stratified Side Game – Warwick Series Session 6

Newcomer Stratified Pairs

Championship Events in **Bold**



WINNERS, WINNERS, EVERYWHERE



(Left) Congratulations to Marsha Addis (seated) and Marlene Farbman, both from MA, who won the Newcomers' Pairs on Sunday evening.

(Right) Winners of last night's Newcomers' Pairs were Sandra Curtis (left) now of To, but formerly of Bda and Marsha Fraser (right) of Bda. Excellent work, ladies.



Well done to the "Miracle Girls", as they call themselves. Bonny Scherer (left) and Phyllis Van Deventer (right), both from New Jersey, were the overall winners in last evening's side game. Well done, ladies.

(Right) The Committee That Never Sleeps is obviously running on adrenaline as Katrina Van Pelt (left) and Donna Lietch (right) are leading the field in all sections after the first leg (geddit?) of the Championship Pairs. Or, are they taking secret naps? In any case, you go, girls!



Congratulations also to Art d'Entrement (SK) and Olivia Brown (Texas) who won the Newcomer afternoon side game.



IN THE SPOTLIGHT

This Week, some splendid trophies will be fiercely contested – three of these are the Maud Lines Trophy, awarded to the overseas visitor who gains the most masterpoints, the Norman Bach Trophy, awarded to the local player who gains the most masterpoints, and the Kindley Cup, awarded to the winners of the Bracketed Championship Knockout Teams.



The Maud Lines trophy (left) is named for a former President of the Bermuda Bridge Club and has been won by, amongst others, the following: Edgar Kaplan, Eric Kokish, Jim Linhart, Zeke Jabbour and George Rosenkranz

The Norman Bach Trophy (right) is also named for a former Bermuda Bridge Club President and one who, in 1950, initiated and helped organize the very first Bermuda Bowl competition, held in Bermuda and contested by Great Britain, Europe and the U.S.A., the eventual winners. Busy Bach was also instrumental in forming the first Bermuda unit of the American Bridge League, so he is a veritable giant on the local bridge landscape.



Perhaps the most illustrious of all our trophies, however, is the Kindley Cup (left), awarded to the winners of the Bracketed Championship Knockout Teams. Names on THIS trophy include Charles Goren, Helen Sobel, Alvin Landy, Howard Schenken, and Sam Stayman.

With any one of these trophies in your hands, you will be holding a piece of Bridge history – not everyone can win them, but if they come to or near your table at the banquet, cop a feel anyway - of the silverware, that is! **(Co Chairs' Comment: "OMG, pass those smelling salts again!")**

REPORTS OF THE DEMISE OF THE BERMUDA REGIONAL NOT ONLY GREATLY EXAGGERATED BUT JUST PLAIN FULLISH (Editor's Note: a local expression meaning "poppycok")!

Several people have asked whether or not the Bermuda Regional will run again next year, clearly under the impression that it will not.

Although the Committee Never Sleeps, it is experiencing nightmares over this mis-apprehension.
So, to be clear:

The Bermuda Regional is **alive and decidedly kicking** and will run from **January 26th to February 1st** next year, at which time we sincerely hope to see you all again.

EXPERT LECTURE

“It’s All in Your Head”

In his time, GS Jade Barrett has won more than 400 major events and has gained 22,000 masterpoints; however, he has also **lost** over **38,000** times and, coping with those times in particular, has helped **him** get **his** head straight so that he can talk about putting **yours** in good order.

In his trademark relaxed and conversational way, he revealed many interesting insights into the game, occasionally aided by his wife, Karen. At the end, and above all, he advised us all to “practise serenity”, but to those of us not in that Zen frame of mind, there was plenty else to help us get our heads in the right place and gird ourselves for the “battle” that is a game of Bridge.

On Bridge in General: Bridge is not fun, it’s WAR, an opportunity to challenge everyone on the field of battle. You buy an entry to WIN not to give scores away. Bridge is only fun in the bar after the game.

On Why We Play Bridge: We play to WIN, plain and simple. And, along the way, we earn a sense of accomplishment because we KNOW we’re never the best we can be and that we can improve, and improving gives us enjoyment and satisfaction. Never expect to play perfectly – that is the mindset to insanity – instead, expect to LEARN from every hand. Defeat can be turned into victory if we don’t whine and wine but learn and grow from it.

On Ego v Judgement: Don’t let the former overcome the latter. Negativity can be channelled so that it works for you.

On Focus: Never play cavalierly. If you don’t focus, you handicap yourself and everyone then becomes dangerous. In situations where your focus is less than 100%, the least likely opponent will hurt you badly. In this regard, don’t carry the problems from one hand to the next because you need all your faculties to deal with the new challenge.

On Planning Your Play: Always consider the whole hand right from the beginning. Most beginners don’t start thinking until Trick 3 by which time they’ve blown all their entries, whereas information gleaned as early as the auction is critical to all lines of play.

On Listening and Adjusting: Listen carefully to the auction and pay particular attention to the opponents’ system, and don’t be afraid to adjust your own bidding and play to incorporate what you learn. In this way, you can convert any systemic advantage which your opponents may have had to your own.



“In bridge, move away from the idea of always plus and work to achieve par. Par is the best you can do against the best they can do even if it means a minus score. Sometimes success means going down.”

So, there it was, all that good stuff in his head the whole time - and now it’s in yours. Time for Jade to work on what’s in his feet now (more later)!

LOCAL LORE/BERMUDA BITS

(RE-RUN from 2011)

It is widely believed that Shakespeare used the shipwreck of the Sea Venture in 1609 (which led to the settlement of Bermuda) as inspiration for "The Tempest". There is reference in the play to "the still-vexed Bermoothes", many local place names bear witness to the connection – Ariel Sands, Prospero's Cave, Caliban's Restaurant, for example – and the title and refrain from Bermuda's National Song - "This Island's Mine" – is uttered first by the monstrous Caliban.

Borrowing from the Bard, here are some words from that same play adapted to use in your **own** play with your partner:

Thank you, partner – your cards are "such stuff as dreams are made of"

"O brave new world/ That has such people (as my partner) in it"

"For this (bid) be sure, (partner), tonight thou shalt have cramps"

"I do begin do have bloody thoughts", partner!



LOCAL LORE/BERMUDA BITS (NEW for 2012)

The subject of shipwrecks, ancient and modern, brings us inevitably to the endlessly fascinating topic of the Bermuda Triangle, an area bordered by Bermuda, the east coast of the United States and Puerto Rico. Legend has it that over the last two centuries, boats, ships and even aircraft have mysteriously disappeared in this region, neither victims nor vessels ever found, one of the most famous of these being Flight 19 which went missing in 1945.

Popular culture has attributed these disappearances to the paranormal or to activity by extraterrestrial beings, but documented evidence indicates that a significant number of the incidents were inaccurately reported or embellished by later authors, and numerous official agencies have stated that the number and nature of disappearances in the region are similar, in any case, to those in any other area of ocean.

Shakespeare himself would have had no truck with such gainsaying: in "Hamlet", when the pragmatic Horatio is having trouble swallowing the whole business of the elder Hamlet's ghost, Prince Hamlet remonstrates sharply – "There are more things in heaven and earth, Horatio, than are dreamt of in your philosophy." Zounds! That doth sock it to 'em, sirrah! (Editor's Comment: **"That last bit's me not the Bard"**).



"After last night's game I'd like to send my partner on a trip – anywhere, as long as it's through the Bermuda Triangle!"

Don't forget! Bacci is closed today! D'oh!



BRIDGE BOFFIN COMPETITION

Bridge Boffin 3 (Monday)



Editor's Suggestion:

"That David Ezekiel – what a card! You gotta catch his panel show today!"

Some of Yours: 1) "Did I just revoke?" – Kumar Setty, Bermuda

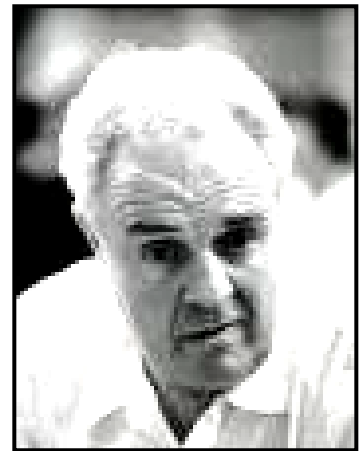
2) Oh-oh! Here come the Directors!

What about this one? Bridge Boffin 4 (Tuesday)

The Editor's caption to this picture of the iconic Oswald Jacoby is:

"You ask what my partner's bid means? Beats me, sport!"

As usual, pop your suggestions in the Bulletin's Bright Blue Box next to the Hospitality Desk asap today or e-mail the Editor (see below) by the same time today! Don't forget to include your name and where you're from so that we can properly credit you!



OVERHEARD IN AN ELEVATOR SOMEWHERE NEAR YOU



"If only I hadn't gone down, I would have made it."

IN YOUR HEAD AS YOU HEAD FOR THE TABLES

"To play well you must know the ropes – including the kind you give an opponent so that he can hang himself."

Alfred Sheinwold

Editor's Comment: Or, in the words of the irrepressible Mae West:
"A dame that knows the ropes isn't likely to get tied up."



ALERT! NOTICES

SECTION TOPS

Today would be a **good day** to collect your Section Top prizes from the Section Top Desk next to the Hospitality Desk. Don't wait another moment!

FLOWER POWER

The Beautiful arrangements of flowers which you see around the hotel are the handiwork of Debbie Burville, wife of one of our local players, John Burville. Thanks to her for these.

ATTENTION, TODAY'S WINNERS!

We would like photographs of all today's Championship winners, including Flight B and C winners. To have your photo taken for the bulletin, please come to the table in the corner of the main playing area, just to the right of the Directors' table as you look towards it, as soon as you know you've won. Here we will continue to attempt to take photos which highlight your best qualities, although we cannot, in some cases, trump Nature herself.

HOTEL SHOPPING

The splendid hotel stores are open 7 days a week so there's plenty of time to give that trusty credit card a good workout. Most are open from 9 a.m. till 5 p.m. (although some open at 10 a.m. on Sunday) and the Mezzanine stores close for daily between 1 p.m. and 2 p.m.

BANQUET AND PRIZE GIVING

Time is now running **seriously short** to book your table for the Banquet and Prize Giving Ceremony on Friday 28th.

You **MUST** sign up for this event at the Hospitality Desk **by tomorrow** or risk missing a fun party. If you can't find enough people to sit with you, the Committee That Never Sleeps will busy themselves through the night on your behalf!

Once again, the evening is formal, so don't hold back in the finery stakes!

CRAFTY LOCALS

TODAY at 4 p.m.

Make time **today** after the afternoon game to attend a craft market of local products in the Poinciana Foyer. Here's a fine chance to acquire a locally made memento of your Bermuda experience. Bring your tea.

Cash sales only, please! For your convenience, that ATM machine is still located in the lower lobby of the hotel.

EXPERT ACTIVITIES DURING THE WEEK

Expert Panel Show – Gardenia Room **TODAY** and on **Thursday 27th** at 10:30 a.m. Dripping with wit and humour (or so says Speakeasy's P.A.), the show is a must!

Expert Lectures – Gardenia Room **TODAY** at 4:30 p.m. by Robert Todd

LUNCH SPECIAL:

For maximum speed between games, pre-order a \$17 soup and sandwich special by 9:00 a.m. each day from the Hospitality Desk. Pick-up from the Poinciana Foyer from 11:30 to 12:30. Please check at the Desk for the different daily menus. Today's menu is Chicken Salad on Kaiser Roll with lettuce and Tomato and Cream of Vegetable Soup. Tomorrow's menu is Ham and Gruyere Cheese with Honey Mustard Mayo on Multi Grain and Tomato and Basil Soup



CADDIE CORNER

The tournament caddies are all young volunteers (so, don't forget those manners!), and have been recruited by Girl Guiding Bermuda, which provides girls and young women aged 5-25 years with the opportunity to develop new skills, gain new experiences and make a positive contribution to society. With over 400 members in Bermuda, the Guides are making a real difference to the current and future lives of many young women and adult supporters on the island.

The donation which the tournament gives to Girl Guiding Bermuda will help Guides to represent Bermuda at international events, where they mix with Guides and Girl Scouts from across the globe and begin to understand their own contribution to a better world.

During a guiding career, a variety of proficiency badges may be earned. Listed below are some of these and how we can help our caddies earn them this week:



Finding Your Way – when you call a Caddy to your table, make your call clear and polite so that **THEY** can **FIND** their **WAY** to you easily. Also, don't take it out on the caddies if **YOU FIND** things not going **YOUR WAY** at any time during the week.

Communicator and Interpreter – be polite to your caddies, make your requests easy to understand, and don't muddy the waters with Bridgespeak more than is absolutely necessary.



Personal Safety and Survival – pride yourselves on making it easy for our caddies to earn both these badges easily this week.

Animal Active and Circus Skills – pride yourself on not giving the caddies **ANY OPPORTUNITY AT ALL** to earn **THESE** badges this week!



Chocolate – Enough said as long as there's plenty of it!



Two of our young helpers – Hannah Guntl (left), 14 and Kiarra Francis, 11

YESTERDAY'S BEST BY ADAM KAPLAN An Educated Guess

Board 9 - IMPs, East-West Vulnerable, West deals.

	♠ AJ963		
	♥ J63		
	♦ T874		
	♣ 6		
♠ -----		♠ KT4	
♥ T4		♥ KQ98752	
♦ A95		♦ J62	
♣ KQJ85432		♣ -----	
	♠ Q8752		
	♥ A		
	♦ KQ3		
	♣ AT97		
NORTH	EAST	SOUTH	WEST
			4♣
P	P	4♠	P
P	P		

Auction Analysis:

Opening 4 of a minor is one of my favourite pre-empts. It disrupts the opponents enough to create some very difficult bidding problems, but leaves them enough room to rescue you if you've walked into a trap. West's choice of 4♣ was a bit unusual on this deal, since ruling out 3N on the first round of the auction doesn't seem right. Today, however, it created quite a problem for me as South. At IMPs, I believe the percentage choice is to Pass and take the nearly guaranteed positive score. At Matchpoints, I think an optimistic 4♠ is best. Against my better judgment, I chose 4♠ anyway, which ended the auction.

Play Notes:

After East's CK lead, the contract looked in pretty good shape. Partner's support was a very welcome surprise. West ruffed the club, and returned the HK. I won the HA perforce, with West carding showing an even number. I then led a trump toward dummy, with West pitching a small club. I have a sure spade loser, and have already lost one trick. The problem on this deal is to avoid two diamond losers... What's the plan?

We still have plenty of entries to lead diamonds toward our honours if necessary. It cannot hurt to strip out the heart suit first. I ruffed a heart in hand and played the CA, pitching dummy's last heart. West can ruff the CA, but now they must either play a diamond, or concede a ruff-and-discard. If they return a heart, it's all over immediately. If they return a diamond, we have to guess who holds the DJ and who holds the DA. At the table, East returned a low diamond, and after some thought, I decided that holding the SK, seven hearts to the KQ as well as the DA, they probably would have tried 4H over 4C, so I played low. After the successful diamond guess I had 10 tricks. This was one of several very interesting hands from the first round of the Knockout today. We advanced to the second round and live to fight another day!

YESTERDAY'S BEST BY THERI ANDINO

What do you call a nine-card suit?

Bd 26, East Dealer, E/W Vulnerable

	♠ KT		
	♥ A643		
	♦ KJ7654		
	♣ 4		
♠ --		♠ AQ87654	
♥ Q985		♥ J7	
♦ --		♦ AT92	
♣ AKT987632		♣ --	
	♠ J932		
	♥ KT2		
	♦ Q83		
	♣ QJ5		

NORTH	EAST	SOUTH	WEST
	1♠	Pass	2♣
3♦	4♠	Pass	5♣
All pass			

It's not often you get to pick up a 9-card suit, much less have your partner open the bidding in front of you. On this deal, reported and played by Russ and Dee Craft in their afternoon knockout match, Dee held the West cards and in spite of her partner's best efforts to play in Spades, she insisted on her own (hopefully) self-sufficient suit. It sure feels like a 3-loser hand opposite an opening partner who ought to be able to make a game, and might not even be bidding enough here!

(At the other table, the West hand passed partner's 4 Spade bid, which turns out to be an even more unfortunate place to play.)

But now it's up to North to make an opening lead that won't give this whole thing away. Both black suits sound awfully dangerous and should be avoided. That Diamond suit he overcalled is also pretty anaemic – and in general, we'd like to not lead away from that kind of tenace unless we've got some encouragement from partner. So a Heart looks like the way to go, and leading that Ace sounds more attractive than taking the big leap of under-leading it.

When the smoke cleared, Dee was down one – nothing to be done about those three losers she started with. Interestingly, even with partner's two Aces as "winners," she would still be down one if allowed to get to them on the dummy.

YESTERDAY'S RESULTS

MON-TUE COMPACT KO, BKT 1 8 Tables

Rachael Gosling, Paget Bermuda; Kevin Comeau, Devonshire, Bermuda; Robert Todd, Tallahassee FL; Adam Parrish, Arlington MA
vs
Edward White, Grand Blanc MI; Bert Newman, West Bloomfield MI; Vera Petty - Roman Smolski, Warwick Bermuda

MON-TUE COMPACT KO, BKT 2 14 Tables

Scott Godet - Sally Godet, Paget Bermuda; Deborah Jhuboo, Hamilton Bermuda; Charles Pearman, Devonshire Bermuda
vs
Greta Shewan, Laguna Woods CA; Irene Bates, Laguna Hills CA; Kaye Langston, Goldsboro NC; Nelson Crisp, Greenville NC

Curt Lemkau - Susan Lemkau - Carolyn Laible, Short Hills NJ; Ruth Macpherson, Chatham NJ
vs
John Hodge - Sue Hodge, Allendale NJ; Ruth Guthery - V John Guthery, Wyckoff NJ

CHAMPIONSHIP KO, BKT 1 10 Tables

Gertrude Barker, Warwick Bermuda; Jane Smith, Flatts Bermuda; Sheena Rayner - Magda Farag, Hamilton Bermuda
vs
Jean Johnson, Devonshire Bermuda; Allan Graves, Barnet VT; Joseph Wakefield, Smith's Parish Bermuda; McKenzie Myers, Beaverton OR;
David Ezekiel, Hamilton Bermuda
vs
Peggy Robinson - Ann Panzer, Boca Raton FL; Brenda Fortunate, Grand Blanc MI; Margaret Way, Paget Bermuda

Patricia Herlihy, New York NY; Theresa Andino, Niceville FL; Robert Todd, Tallahassee FL; AdamKaplan, New Port Richey FL; Adam Parrish, Arlington
MA
vs
Helen Richards - Margot Holden - Theresa Redelmeier, Toronto ON; Yvonne Kennedy, Willowdale ON
vs
Renate Hansen - Andreas Babsch, Vienna Austria; Gabriele Cappeller - Joachim Cappeller, Hamburg Germany

CHAMPIONSHIP KO, BKT 2 16 Tables

Judy King - Aida Bostelmann, Paget Bermuda; Jeanette Shaw, Somerset Bermuda; Donna Leitch, Smith's Parish Bermuda
vs
Hubert Wallenfels, Seattle WA; Ruth Twombly, East Orleans MA; Carol Staneslow - Roger Staneslow, Calgary AB

Julia Beach, Smiths F10 Bermuda; Gill Gray, Pembroke Bermuda; Mona Marie Gambriell, PagetBermuda; Patricia Siddle, Hamilton Bermuda
vs
Mickey Karlan, Port Chester NY; Susan Maier, Scarsdale NY; Phyllis Merritt, Waynesboro VA; JaneCangalosi, Staunton VA

Greta Marshall - Lynanne Bolton, Warwick Bermuda; Louise Rodger, Paget Bermuda; Peter Donnellan, Hamilton Bermuda
vs
Rachael Gosling - John F. W. Glynn, Paget Bermuda; Kevin Comeau, Devonshire, Bermuda; ElizabethMcKee, Devonshire Bermuda

Greg Carey, Hamilton Bermuda; Paul Thompson, Warwick Bermuda; Dee Craft - Russell Craft, Smith'sParish Bermuda
vs
Graham Fenton, Sarajevo Bosnia Macedonia; Judith Bussell, Devonshire Bermuda; Stephanie Kyme -Eddie Kyme, Pembroke Bermuda

MONDAY MORNING SIDE GAME

6.5 Tables

	A	B	C		
2.58	1	1		Eric Endicott - Linda Akazawa, Toronto ON	63.80%
2.12	2	2	1	Barbara Gallagher, Littleton CO; Maureen Sabo, Bedford Hills NY	60.00%
1.45	3	3		Barbara King - La Vee Bailey, Smithfield NC	58.33%
1.11	4			Marv Norden, Peachland BC; John Coone, Vernon BC	57.90%
0.82	5			Patricia Herlihy, New York NY; Theresa Andino, Niceville FL	54.42%
1.03		4		Anne Sixsmith, Washago ON; Betty Marshall, Orillia ON	53.00%
1.59			2	Yvette Cole, Harrison NY; Ruth Brandt, Scarsdale NY	49.00%
1.19			3	Patricia Hayward, St David's Bermuda; Janet Henrichsen, Arlington VA	47.60%

MONDAY AFTERNOON SIDE GAME

21.0 Tables

	A	B	C		
4.70	1			Art D'Entremont, Regina Beach SK; Olivia Brown, San Antonio TX	63.69%
4.10	2	1		Donald MacMillan - Mickey MacMillan, Cotuit MA	61.90%
2.64	3			David Priest - Gordon Tanner, Bakersfield CA	60.42%
3.08	4	2		Nancy Brown - Carol Seager, Worcester MA	59.23%
2.31	5/6	3		Richard Gray - Wendy Gray, Southampton Bermuda	58.04%
1.59	5/6			Marv Norden, Peachland BC; John Coone, Vernon BC	58.04%
2.73		4	1	Deborah Crisfield, Summit NJ; Jennifer Feltes, New Vernon NJ	56.55%
2.05		5	2	Barbara Mulder, Southampton Bermuda; Ivy Rosser, Warwick Bermuda	55.36%
1.54		6	3	Jane Grewcock - Allison McGeough, Summit NJ	55.06%
1.15			4	Lucian Platt, Rosemont PA; Kathrin Platt, Bryn Mawr PA	54.17%
0.86			5	Mary Akin - Mary Daniher, Toronto ON	53.87%

MONDAY AFTERNOON NEWCOMER PAIRS

13.5 Tables

	A	B	C		
3.19	1	1	1	Phyllis Van Deventer, Summit NJ; Bonny Scherer, Murray Hill NJ	66.59%
2.39	2	2		Rita Lee, Chatham NJ; Lynn McLaughlin, New Vernon NJ	62.85%
1.79	3			Deborah Jhuboo, Hamilton Bermuda; Ellen Davidson, Warwick Pg01 Bermuda	59.65%
1.35	4			Dianna Kempe, Paget Bermuda; Thomas Bolton, Hamilton Bermuda	59.58%
1.01	5	3	2	Kathryn Deyo, Short Hills NJ; Karen Rovick, Enfield NH	59.38%
0.80	6			Joyce Rego, Paget Bermuda; Ann Proctor, Saint George Bermuda	58.58%
0.76		4		Barbara Gibbings - Brian Gibbings, Toronto ON	51.14%
0.89		5		Dorid Lamb - Tony Lamb, Summit NJ	51.06%
0.68			3	Suzy Gumm - Mary Reber, Chatham NJ	51.02%
0.56			4	Mary Jo Herr - Tiffany Corbett, Summit NJ	48.22%

MONDAY EVENING SIDE GAME

14.0 Tables

	A	B	C		
3.64	1			Jean Levin - Donald Geerhart, Springfield VA	60.80%
2.73	2			Lorraine Holub, Hilton Head Is SC; Joan Simon, Dataw Island SC	59.09%
3.19	3	1		Jack Barclay, Oshawa ON; John Stafford, Newcastle ON	58.14%
1.57	4			Julia Lunn, Southampton Bermuda; Karen Lee Barrett, Elk Point SD	56.06%
2.39	5	2		Eric Endicott - Linda Akazawa, Toronto ON	55.11%
1.12	6/7			Marv Norden, Peachland BC; John Coone, Vernon BC	54.92%
1.79	6/7	3		Esther Climans, Thornhill ON; Belle Levman, Toronto ON	54.92%
2.27		4	1	Jim Kellogg - Gail Kellogg, Short Hills NJ	54.36%
1.70		5	2	Deborah Crisfield, Summit NJ; Jennifer Feltes, New Vernon NJ	53.03%
1.28		6	3	Charles Pearnan, Devonshire Bermuda; Ernest Paynter, Hamilton Parish Bermuda	52.46%
0.96			4	Barbara Gallagher, Littleton CO; Maureen Sabo, Bedford Hills NY	52.08%

**MONDAY EVENING NEWCOMER PAIRS
13.5 Tables**

	A	B	C		
3.19	1			Carolyn Laible, Short Hills NJ; Ruth Macpherson, Chatham NJ	66.89%
2.39	2	1		Sandra Curtis, Toronto ON; Marsha Fraser, Hamilton Bermuda	66.23%
1.79	3	2	1	Suzy Gumm - Mary Reber, Chatham NJ	58.28%
1.35	4	3		Martha Ferguson, Hamilton Bermuda; Mark Crampton, Devonshire Bermuda	57.55%
1.12	5	4		Barbara Gibbings - Brian Gibbings, Toronto ON	56.45%
0.80	6			Barbara Murray, Chatham NJ; Linda Schlereth, Short Hills NJ	56.23%
1.10		5	2	Lambi Newsham, Summit NJ; Joan Brennan, Hinsdale IL	53.80%
0.83		6	3	Patricia Murray, Basking Ridge NJ; Karlene Granger, New Providence NJ	52.05%
0.62			4	Karen Pfister, New Providence NJ; Marilyn Bratz, Millington NJ	52.02%
0.47			5	Stephen Smith, Bermuda Bermuda; Andy Carne, Hamilton Bermuda	51.93%

**MON-TUE OPEN PAIRS, HALFTIME LEADERS
31.0 Tables**

	A	B	C		
	1	1	1	Katrina Van Pelt - Donna Leitch, Smith's Parish Bermuda	350.28
	2			Joseph Wakefield, Smith's Parish Bermuda; Allan Graves, Barnet VT	342.50
	3			Peggy Robinson - Ann Panzer, Boca Raton FL	338.50
	4			G S Jade Barrett, Elk Point SD; Jeff Roman, Alexandria VA	337.00
	5			Jean Johnson, Devonshire Bermuda; McKenzie Myers, Beaverton OR	334.00
	6	2		Stephen Ball, Smith's Parish Bermuda; Linda Pollett, Pembroke Bermuda	333.05
	7			William Tucker, Hamilton Bermuda; Alan Douglas, Smith's Parish Bermuda	327.00
	8			Edward White, Grand Blanc MI; Bert Newman, West Bloomfield MI	323.50
	9	3		Arthur Bergman - Jacqueline Bergman, Panama City FL	318.78
	10			Adam Kaplan, New Port Richey FL; Adam Parrish, Arlington MA	317.70
	11			John Burville, Pembroke Bermuda; Robert Todd, Tallahassee FL	307.06
	12	4		Marcelle Davidson - James Davidson, West Chester PA	306.24
	13	5	2	Gill Gray, Pembroke Bermuda; Patricia Siddle, Hamilton Bermuda	299.26
	14	6		John F. W. Glynn, Paget Bermuda; Elizabeth McKee, Devonshire Bermuda	298.91
	15			Phyllis Dubetsky - Allen Selling, Boynton Beach FL	297.19
	16			Marshall Kuschner, Reston VA; Gerald Goodale, Fairfax VA	296.76
	17			Margie Sullivan, Sagamore Beach MA; Stephen Rzewski, South Dennis MA	296.50
	18	7		Muriel Golden, East Falmouth MA; Harry Felger, Mashpee MA	295.95
	19			Shirley Eide - Grace Tanner, Bakersfield CA	295.00
	20	8	3	J Ross Quigley, Toronto ON; Dan MacNeil, Aurora ON	294.89
		9		Rachael Gosling, Paget Bermuda; Kevin Comeau, Devonshire, Bermuda	294.61
		10		John Hoskins - Freya Giffen, Hamilton Bermuda	294.30
		11	4	Steve Johnson, Hampshire England; Ron Zeran, Willowdale ON	289.50
		12	5	Sandy Kucha, Rancho Santa Fe CA; Lawrence Erickson, Carlsbad CA	282.55
		13		V John Guthery - Ruth Guthery, Wyckoff NJ	282.54
		14		Patricia Morrison, Wellington NS; Maureen Donovan, Halifax NS	274.61
		15	6	Peter Donnellan, Hamilton Bermuda; Dolly Winwick, Southampton Bermuda	273.63
			7	Jacqueline Swan, Paget Bermuda; Graham Fenton, Sarajevo Bosnia Macedonia	270.00
			8	William Pollett, Pembroke Bermuda; Simon Giffen, Hamilton Bermuda	267.31

**SUN-MON SIDE GAME SERIES
33.00 Tables / Based on 16 Tables**

6.37	1/2	Jean Levin, Springfield VA	124.30%
6.37	1/2	Donald Geerhart, Springfield VA	124.30%
6.11	3/4	Carol Seager, Worcester MA	124.11%
6.11	3/4	Nancy Brown, Worcester MA	124.11%
4.97	5/6	Linda Akazawa, Toronto ON	118.91%
4.97	5/6	Eric Endicott, Toronto ON	118.91%

MON MORNING SIDE GAME 3 OF 5 SESSION

NORTH-SOUTH			SECTION C	EAST-WEST		
A	B	C	A	B	C	
1	1	1	1	1		Eric Endicott - Linda Akazawa, Toronto ON 63.80%
2	2		2			Marv Norden, Peachland BC; John Coone, Vernon BC 57.90%
3			3	2	1	Yvette Cole, Harrison NY; Ruth Patricia Hayward, St David's Bermuda; Janet Henriksen, Arlington VA 47.60%
					2	

MON AFT SIDE GAME 4 OF 5 SESSION

NORTH-SOUTH			SECTION C	EAST-WEST		
A	B	C	A	B	C	
1			1	1		Donald MacMillan - Mickey MacMillan, Cotuit MA 61.90%
2	1	1	2			David Priest - Gordon Tanner, Bakersfield CA 60.42%
3	2		3			Tiger Li Li Williams, Elk Point SD; Marshall Kuschner, Reston VA 56.55%
4	3	2	4	2	1	Lucian Platt, Rosemont PA; Kathrin Platt, Bryn Mawr PA 54.17%
	4				3	Robert McClanahan - Sarah McClanahan, Short Hills NJ 52.68%

NORTH-SOUTH			SECTION D	EAST-WEST		
A	B	C	A	B	C	
1/2	1		1	1		Nancy Brown - Carol Seager, Worcester MA 59.23%
1/2			2	2	1	Deborah Crisfield, Summit NJ; Jennifer Feltes, New Vernon NJ 56.55%
3			3	3	2	Jane Grewcock - Allison McGeough, Summit NJ 55.06%
4	2	1	4	4		Esther Climans, Thornhill ON; Belle Levman, Toronto ON 50.60%
	3					
	2					

MON AFT NEWCOMER PAIRS

NORTH-SOUTH			SECTION B	EAST-WEST		
A	B	C	A	B	C	
1			1	1	1	Phyllis Van Deventer, Summit NJ; Bonny Scherer, Murray Hill NJ 66.59%
2			2	2		Rita Lee, Chatham NJ; Lynn McLaughlin, New Vernon NJ 62.85%
3			3	3	2	Kathryn Deyo, Short Hills NJ; Karen Rovick, Enfield NH 59.38%
4			4			Janet McLaughlin - William McLaughlin, Tega Cay SC 55.00%
5			5	4		Barbara Gibbings - Brian Gibbings, Toronto ON 51.14%
6	1		6			Suzy Gumm - Mary Reber, Chatham NJ 51.02%
	2					
	3	1				

MON-TUE OPEN PAIRS FIRST SESSION

NORTH-SOUTH			SECTIONS B C D				EAST-WEST		
A	B	C		A	B	C	D		
1	1	1	Katrina Van Pelt - Donna Leitch, Smith's Parish Bermuda	63.46%	1			Peggy Robinson - Ann Panzer, Boca Raton FL	61.32%
2			Joseph Wakefield, Smith's Parish Bermuda; Allan Graves, Barnet VT	62.05%	2			G S Jade Barrett, Elk Point SD; Jeff Roman, Alexandria VA	61.05%
3			William Tucker, Hamilton Bermuda; Alan Douglas, Smith's Parish Bermuda	59.24%	3			Jean Johnson, Devonshire Bermuda; McKenzie Myers, Beaverton OR	60.51%
4	2		Arthur Bergman - Jacqueline Bergman, Panama City FL	57.75%	4	1		Stephen Ball, Smith's Parish Bermuda; Linda Pollett, Pembroke Bermuda	60.34%
5			John Burville, Pembroke Bermuda; Robert Todd, Tallahassee FL	55.63%	5			Edward White, Grand Blanc MI; Bert Newman, West Bloomfield MI	58.61%
6	3		Marcelle Davidson - James Davidson, West Chester PA	55.48%	6			Adam Kaplan, New Port Richey FL; Adam Parrish, Arlington MA	57.55%
7	4	2	Gill Gray, Pembroke Bermuda; Patricia Siddle, Hamilton Bermuda	54.21%	7	2		John F. W. Glynn, Paget Bermuda; Elizabeth McKee, Devonshire Bermuda	54.15%
8			Phyllis Dubetsky - Allen Selling, Boynton Beach FL	53.84%	8			Marshall Kuschner, Reston VA; Gerald Goodale, Fairfax VA	53.76%
9			Margie Sullivan, Sagamore Beach MA; Stephen Rzewski, South Dennis MA	53.71%	9			Shirley Eide - Grace Tanner, Bakersfield CA	53.44%
10	5		Muriel Golden, East Falmouth MA; Harry Felger, Mashpee MA	53.61%	10	3		Rachael Gosling, Paget Bermuda; Kevin Comeau, Devonshire, Bermuda	53.37%
11	6	3	J Ross Quigley, Toronto ON; Dan MacNeil, Aurora ON	53.42%	11			Margaret Way, Paget Bermuda; Lynanne Bolton, Warwick Bermuda	51.82%
12	7		John Hoskins - Freya Giffen, Hamilton Bermuda	53.32%	12			David Priest - Gordon Tanner, Bakersfield CA	51.81%
	8		Steve Johnson, Hampshire England; Ron Zeran, Willowdale ON	52.45%	4	1		Sandy Kucha, Rancho Santa Fe CA; Lawrence Erickson, Carlsbad CA	51.19%
					5			Patricia Morrison, Wellington NS; Maureen Donovan, Halifax NS	49.75%
					6	2		Peter Donnellan, Hamilton Bermuda; Dolly Winwick, Southampton Bermuda	49.57%
					7			Nea Willits, Paget Bermuda; Patricia Hayward, St David's Bermuda	48.68%
					8	3		William Pollett, Pembroke Bermuda; Simon Giffen, Hamilton Bermuda	48.43%

MON EVE SIDE GAME 5 OF 5 SESSION

NORTH-SOUTH			SECTION G			EAST-WEST			
A	B	C		A	B	C			
1			Jean Levin - Donald Geerhart, Springfield VA	60.80%	1		Lorraine Holub, Hilton Head Is SC; Joan Simon, Dataw Island SC	59.09%	
2			Julia Lunn, Southampton Bermuda; Karen Lee Barrett, Elk Point SD	56.06%	2	1	Jack Barclay, Oshawa ON; John Stafford, Newcastle ON	58.14%	
3			Marv Norden, Peachland BC; John Coone, Vernon BC	54.92%	3	2	Eric Endicott - Linda Akazawa, Toronto ON	55.11%	
4	1	1	Jim Kellogg - Gail Kellogg, Short Hills NJ	54.36%	4	3	Esther Climans, Thornhill ON; Belle Levman, Toronto ON	54.92%	
5	2	2	Deborah Crisfield, Summit NJ; Jennifer Feltes, New Vernon NJ	53.03%	5		Art D'Entremont, Regina Beach SK; Olivia Brown, San Antonio TX	52.65%	
6/7	3/4		Helen Richards - Margot Holden, Toronto ON	52.08%	6	4	1	Charles Pearman, Devonshire Bermuda; Ernest Paynter, Hamilton Parish Bermuda	52.46%
6/7	3/4		Barbara Gallagher, Littleton CO; Maureen Sabo, Bedford Hills NY	52.08%	5			Nancy Brown - Carol Seager, Worcester MA	52.27%
					2			Mary Akin - Mary Daniher, Toronto ON	49.05%

MON EVE NEWCOMER PAIRS

			NORTH-SOUTH	SECTION H			EAST-WEST		
A	B	C		A	B	C			
1			Carolyn Laible, Short Hills NJ; Ruth Macpherson, Chatham NJ	66.89%	1	1		Sandra Curtis, Toronto ON; Marsha Fraser, Hamilton Bermuda	66.23%
2	1		Barbara Gibbings - Brian Gibbings, Toronto ON	56.45%	2	2	1	Suzy Gumm - Mary Reber, Chatham NJ	58.28%
3			Barbara Murray, Chatham NJ; Linda Schlereth, Short Hills NJ	56.23%	3	3		Martha Ferguson, Hamilton Bermuda; Mark Crampton, Devonshire Bermuda	57.55%
4	2	1	Lambi Newsham, Summit NJ; Joan Brennan, Hinsdale IL	53.80%	4			Penelope Cooke, Hamilton Bermuda; E Donald Airey, Paget Bermuda	53.38%
5	3	2	Patricia Murray, Basking Ridge NJ; Karlene Granger, New Providence NJ	52.05%	5	4	2	Karen Pfister, New Providence NJ; Marilyn Bratz, Millington NJ	52.02%
6			Marlene Farbman - Marsha Addis, Holden MA	51.82%	6	3		Stephen Smith, Bermuda Bermuda; Andy Carne, Hamilton Bermuda	51.93%
4			Joan Thomas, Brights Grove ON; George Correia, - Bermuda	49.68%					